

ARCHIVE MANAGER™

Archive Manager provides a flexible, powerful and secure solution for capturing, archiving and managing all email traffic in your organization. Simplify email storage and management, reduce storage costs, and support compliance and discovery requirements. Archive Manager seamlessly collects, indexes and archives all Exchange message activity, reducing storage costs by storing only single instances of messages and attachments, and eliminating email quota problems. Archive Manager eliminates the need for PST files, and consolidates all email activity into one central repository, protecting sensitive information and supporting retention policies.

Email has become the informational lifeblood of the modern organization. While this has enabled faster communication, easier collaboration and mobile access to critical information, it has also created a number of organizational compliance and legal challenges. Sensitive corporate information can be shared inappropriately, customer communication can be lost, and discovery requests can involve searching email archives, and PST files stored centrally and on individual computers.

TAKE CONTROL OF EMAIL ACTIVITY

Archive Manager can solve these problems. By centrally capturing, indexing and archiving messages and attachments, Archive Manager ensures all communication is readily available to meet email retention policies, or to satisfy discovery requests. By offloading email storage from the Exchange Server, Archive Manager eliminates email quotas and provides every user with essentially an unlimited inbox. Each message or attachment is stored only once and is compressed by as much as 80%, reducing storage costs. Attachments can be stripped or deleted from messages after a set time, to further reduce storage needs.

NEVER LOSE ANOTHER EMAIL AGAIN

Archive Manager's powerful indexing, tagging and search capabilities make it easy to find a message from last

week, or last year. Search by sender, recipient, date range, attachment, keyword, contents, and more. Archive Manager can discover and import PST files automatically into the central archive, eliminating scattered message stores. Users can access their archives through a web browser, their email client, or a Blackberry or Windows Mobile device. When an employee leaves, you can be certain that you don't lose the valuable correspondence and information they had stored in email.

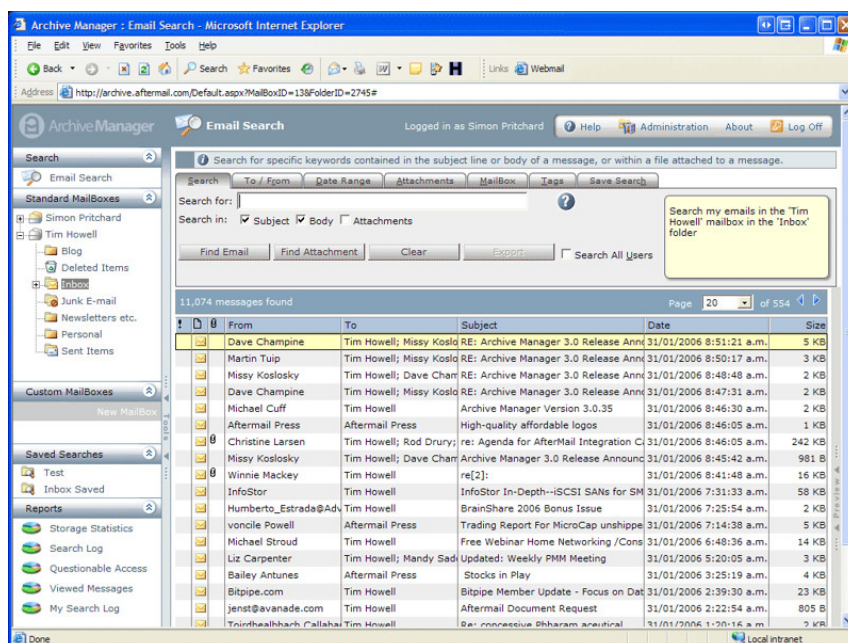
SUPPORT COMPLIANCE AND LEGAL REQUIREMENTS

Emails in the archive are tamper proof, and granular permissions protect access to the archive. Messages can be stored based on retention policies, and when a discovery request comes in, emails can be collected easily and exported in a variety of formats, including PST files.

MAKE EMAIL AN ASSET, NOT A CHALLENGE

Archive Manager can eliminate the challenges you currently face in email management. Once all messaging is centrally stored, indexed and protected, you can start to treat email as a true asset, rather than as an administration challenge. Take advantage of the information you have, and ensure it's protected and always available.

Archive Manager provides an easy-to-use web interface for browsing, searching and managing message and attachment archives.



KEY BENEFITS

Consolidate All Message Activity
Eliminate the management nightmare of having email archives scattered around in PST files. Consolidate all message traffic into one searchable archive.

Enforce Message Retention Policies
Enforce message retention policies by archiving all messages and attachments into the central repository.

Easy Access to Archives
Archive Manager provides a web interface and Outlook client integration to enable users to access and search their message archives.

Simplify Exchange Migration
Simplify Exchange 2007 migration by archiving all messages. Then migration only needs to be performed on current data.

KEY FEATURES

Flexible Retention Options
Set message retention options for all messages, include options for stripping attachments (a stub pointing to the attachment remains) or deleting attachments based on age or size.

Robust Searching Capabilities
Search the message store based on user, recipient, subject, attachment, date range tags or keywords. Search across multiple mailboxes based on permissions.

Support Discovery Efforts
Find all messages and attachments necessary for a discovery effort, then export all messages to a variety of formats, including PST files.

Eliminate PST files
Find and import PST files into the central archive.

Improve Exchange Performance
Reduce the storage load on your Exchange servers, eliminate mailbox quotas and improve Exchange performance by archiving messages.

Minimize Storage Costs
Archive Manager offers single instance storage of all messages and attachments, eliminating redundant files and reducing overall storage requirements.

Zero Impact Implementation
Archive Manager can be installed and configured without installing software on the Exchange server, or the client computers. All current and historical message activity can be captured without user involvement.

Comprehensive Reporting
Detailed reports show storage statistics, searches, questionable access, and viewed messages.

ARCHIVE MANAGER™

EASY, WEB-BASED INTERFACE

Administer and interact with Archive Manager through an intuitive web interface. Users can browse and search their message and attachment archives through their web browser. Administrators use the web interface to manage the archives and run reports.

COMPLETE EMAIL MANAGEMENT

Archive Manager lets you manage every aspect of your email storage. You set the retention requirements for messages. You determine if current email is kept in Exchange, in the archive or kept in both locations. You determine attachment storage options. Attachments can be kept with the message, stripped from the message (which contains a stub that points to the attachment) or deleted after a set time has passed.

SAFE, SECURE AND ACCESSIBLE

Messages in the archive are tamper proof, and a granular permissions model controls access to the archive. While the archive is protected, you can take advantage of the database and web services interface to connect your email storage to other critical applications, making email communication another valuable source of organizational data.

CENTRALIZED REPORTING

Archive Manager provides comprehensive reporting on storage status, product use, search logs, suspicious activity and messaging statistics.

OTHER FEATURES

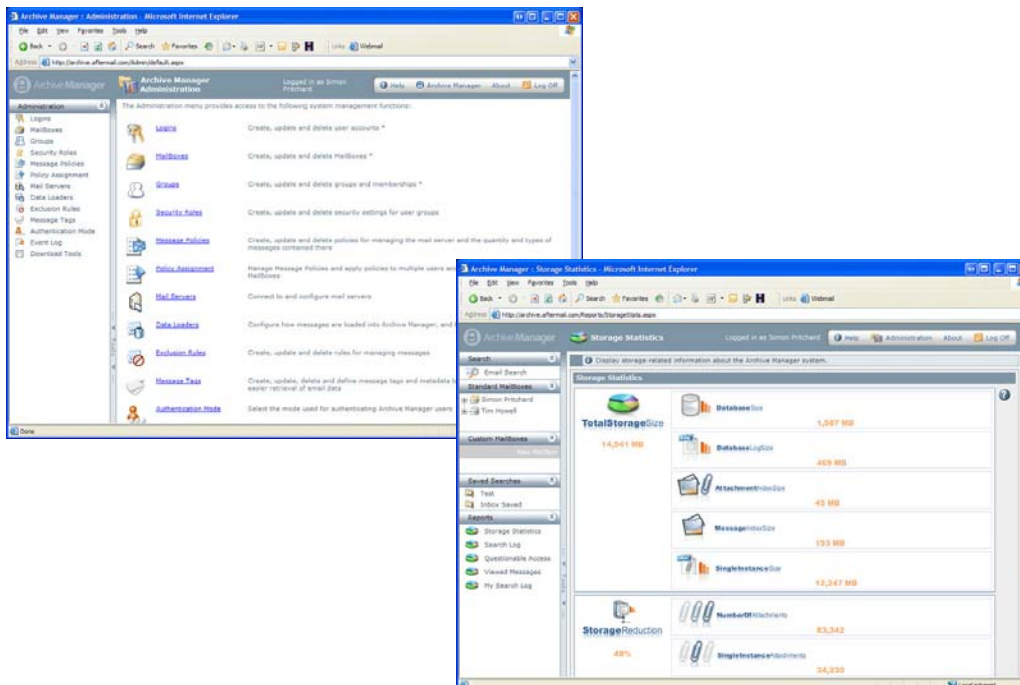
Archive Manager offers many other important features:

- Complete integration with Outlook
- Access to the archive from mobile devices
- Support for Exchange 5.5, 2000, 2003 and 2007
- Strong security permissions model
- Flexible message export options
- Up to 80% compression for attachments
- Multiple attachment storage options
- Optional Vista gadget: Search from the sidebar
- Optional import of remote PST files
- Complete web services interface
- Web-based management reporting
- Comprehensive browser support
- Industry leading technical support

EVALUATION VERSION

More detailed product information, including documentation and an evaluation request for Archive Manager can be downloaded from our web site.

Archive Manager provides a complete administrative interface for managing and reporting on message archive activities.



F.A.Q.

How can Archive Manager support compliance efforts?

Archive Manager can capture every email message, regardless of the users actions and securely stores them in a central archive. Users cannot delete or alter the messages stored in the archive providing you with a trusted store necessary for meeting compliance requirements.

How does Archive Manager eliminate mailbox quotas?

By archiving messages independently of Exchange, Archive Manager can provide each user with essentially an 'unlimited mailbox' because they no longer have to worry about exceeding mailbox quotas. Messages and attachments are archived outside of their Exchange mailbox, but are still available through the web interface or the Outlook client.

SYSTEM REQUIREMENTS

Server Requirements

- Archive Manager requires:
- Windows Server 2000 or 2003
 - Exchange 2000, 2003 or 2007
 - SQL Server 2000 or 2005
 - Internet Information Server
 - Internet Explorer 6.0 or higher

Client Support

Archive Manager can integrate with the following email client programs:

- Outlook 2000
- Outlook 2003
- Outlook 2007
- Entourage 2004 (Macintosh)

LICENSING

Archive Manager is licensed by the number of accounts in your Exchange environment.

To arrange an evaluation, or download additional product information, visit our web site.

For pricing, contact your ScriptLogic reseller or call ScriptLogic at **1.800.813.6415** or **1.561.886.2420**.

Please refer to our web site for international information.