

**Active Administrator** is a comprehensive, integrated Active Directory management and auditing solution for tightening security, increasing productivity and improving business continuity in organizations with Windows networks.

While extremely powerful and flexible, Active Directory quickly becomes very complex to manage in Windows networks of any size. Administrators leave, users are given elevated privileges, applications require special accounts – very soon you have an Active Directory full of security weaknesses with no way to find or audit them. Add to that the difficulty of recovering from accidental deletions of users, groups or OUs, and the risk of editing Group Policies in a live environment, and the task of managing Active Directory with the built-in tools becomes overwhelming.

Active Administrator streamlines the management of Active Directory security, auditing, recovery and Group Policy. With an easy-to-use interface, Active Administrator provides a central point of control for your entire Active Directory environment. Active Administrator's proven, scalable and powerful feature set reduces your Active Directory cost of ownership with time-saving point-and-click control.

### CENTRAL ACTIVE DIRECTORY AUDITING

Active Administrator centrally collects events from the event logs of all Domain Controllers, giving instant visibility of all Active Directory and Group Policy changes. These audit records are stored centrally in an SQL database to maintain a historic record of changes long after the event logs have been cleared, and an alerting function sends instant alerts when selected events occur. The powerful reporting interface provides real-time exploration of the event database and creation of scheduled reports for automated delivery.

### RAPID RECOVERY FOR ACTIVE DIRECTORY

Active Administrator gives administrators instant recovery following unwanted changes or deletions. Scheduled backups allow granular recovery of any combination of Active Directory objects, their attributes, groups and entire Organizational Units. Further, Active Administrator's automated capture of Group Policy changes allows instant rollback to any earlier version.

### KEY BENEFITS

**Tighter Security**  
Simplify and standardize user permissions and privileges. Eliminate over-privileged users. Ensure consistent delegation using Active Templates.

**Meet Compliance Requirements**  
Comprehensive audit trail for Active Directory. Review and enforce access controls. Easy generation of formatted reports to demonstrate compliance.

**Business Continuity**  
Reduce network and user downtime with proactive alerts on user problems, fast recovery from accidental changes and fewer administrative errors.

**Increase Productivity**  
Spend less time on routine AD management tasks. Self-healing Templates and "undo" on AD changes and Group Policies give the administrator time to spend elsewhere.

### KEY FEATURES

**IMPROVED!** **Simplified Management Interface**  
Manage AD delegation, auditing, recovery and Group Policies from a single, integrated, easy-to-use interface.

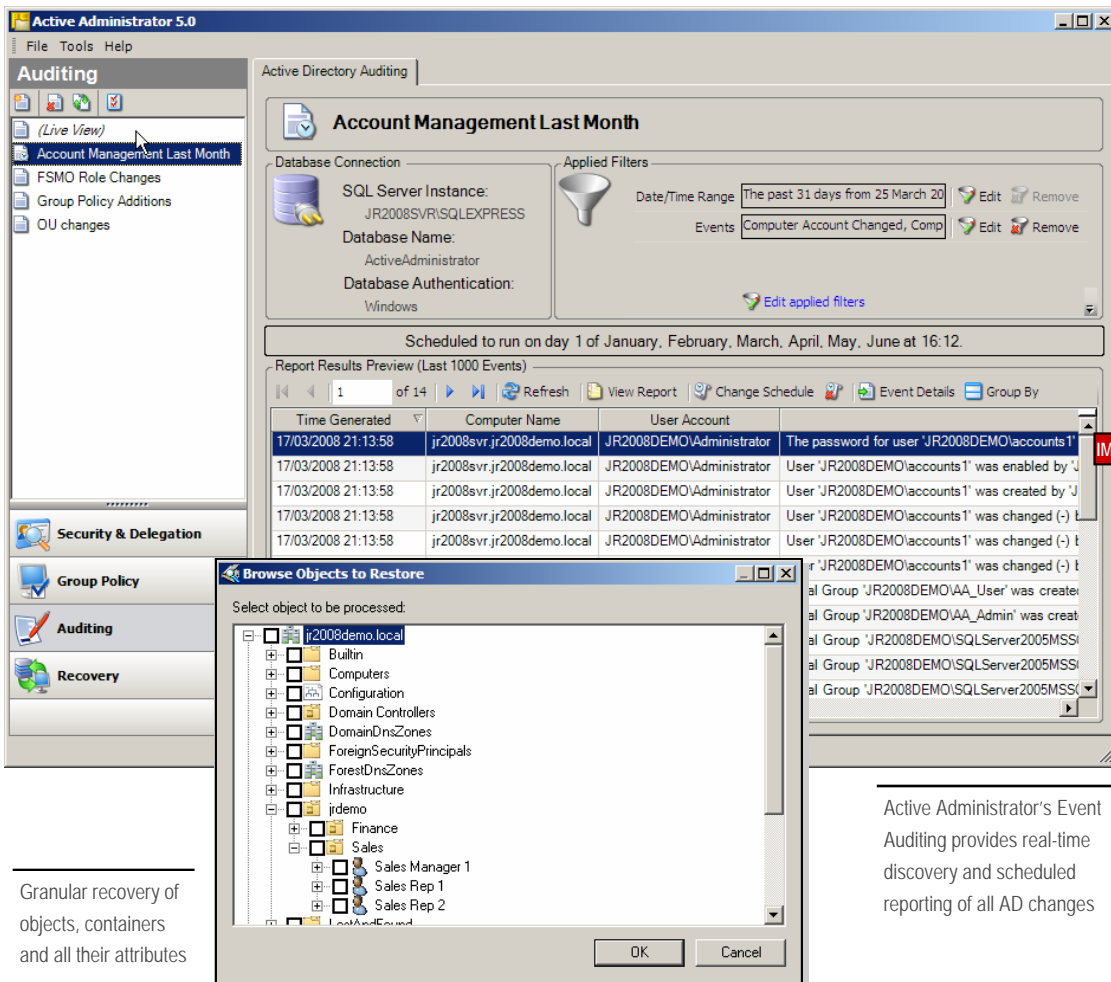
**Instant Backup and Recovery**  
Perform object-level AD backups and instantly recover selected objects or attributes, without rebooting any servers

**Group Policy History and Offline Editing**  
Automatic collection of a history of GPO versions allows instant rollback and comparison of any version. The offline repository allows GPOs to be edited away from the production network, and calculates RSOP on a mix of offline and live GPOs.

**IMPROVED!** **Centralized Event Audit and Alerts**  
Fast and efficient collection of AD events from all Domain Controllers into a database, with alerting on selected conditions, and real-time or scheduled reports based on filter criteria including the acting user, time, event ID, event type, affect objects and more

**NEW!** **Windows Server 2008 Support**  
Support for Windows Server 2008 events, servers and ADMX-based Group Policies

**Active Templates**  
Delegate AD permissions using predefined role-based templates. Administrators can create custom Active Templates to assign permissions for new roles. Once applied, Active Templates are self-healing to ensure permissions stay in place.



Granular recovery of objects, containers and all their attributes

Active Administrator's Event Auditing provides real-time discovery and scheduled reporting of all AD changes

# ACTIVE ADMINISTRATOR™

## SEARCH AND ENFORCE ACTIVE DIRECTORY SECURITY

Active Administrator provides a window directly into the security of objects providing simple navigation through the whole Active Directory environment in one screen. You can easily filter default as well as inherited permissions to isolate those that have been added or delegated, and can easily search Active Directory for where a user or group has permissions.

## DELEGATE ACTIVE DIRECTORY CONTROL

One of the most difficult tasks in managing Active Directory security is assigning permissions consistently. Windows' built-in Delegation of Control wizard has no mechanism to determine if permissions have changed since initial assignment and no mechanism to easily repair them. Active Administrator uses "Active Templates" - defined sets of permissions required for a particular user role. Templates are defined with appropriate permissions, and then applied to users and other objects when

needed, ensuring that permissions are consistently assigned.

Active Administrator then monitors Active Template permissions for modifications and can auto-repair the permissions and notify an administrator of the incident.

## LOW RISK GROUP POLICY MANAGEMENT

Windows' Resultant Set of Policies (RSOP) feature models the combined security and configuration settings the user will experience in their Windows environment. Active Administrator enhances this with the ability to run what-if scenarios, such as moving the user or computer to another OU or site, or adding the user or computer to a group. Active Administrator also mitigates the risk that modifying a Group Policy will have negative effects on production users. With Active Administrator, Group Policies can be modified offline and a mixture of offline and online policies analyzed with RSOP.

Type	Account	Source	Active Template	Permission
Deny	Everyone	Explicit		Delete Objects, Delete Subtr
Allow	Finance Manager 2 (fina...	Active Template	Users - Reset user passw...	Reset Password
Allow	Finance Manager 2 (fina...	Active Template	Users - Reset user passw...	Read/Write pwdLastSet
Allow	Finance Manager 2 (fina...	Active Template	Computers - Full Control	Create/Delete Computer Obj
Allow	Finance Manager 2 (fina...	Active Template	Computers - Full Control	Full Control
Allow	Account Operators (BUI...	Default		Create/Delete InetOrgPerso

Comprehensive access to AD permissions, with Active Templates to ensure and manage consistent role-based delegation

Offline editing of Group Policy allows modeling of Group Policy changes without risking the production network.

## F.A.Q

### What filters can I use in AD event reports?

The database of AD events can be filtered by the user who made the change, the time and date of the change, the DC where it was recorded, the event type, event ID, the text in the description, affected object location and type and success/failure.

### Does it recover Group Memberships?

Yes! When you recover objects Active Administrator recovers attributes and links so Active Directory is completely repaired.

### Is this like Microsoft's GPMC?

No. Active Administrator offers a complete GPO management solution including offline GPO management, GPO rollbacks, and auditing and reporting of all AD changes. Beyond Group Policy management, Active Administrator also manages AD security, role-based delegation of AD permissions with Active Templates, and object-level recovery.

### Does this give me an "Undo" for AD?

Yes! Now you can easily restore deleted or modified objects and rollback Group Policies to any previous version.

### Is an Evaluation Available?

Yes! A fully-functional 30-day evaluation download is available at [scriptlogic.com](http://scriptlogic.com).

## SYSTEM REQUIREMENTS

### Installation

Active Administrator requires installation within a 2000/2003/2008 AD Domain. The auditing feature requires an SQL or SQL Express database.

### Management

The Active Administrator console can be used on any computer running Windows XP or Vista, or Windows Server 2000/2003/2008.

### Client Support

Active Administrator can manage a Windows Server 2000, 2003 or 2008-based AD. Restore of AD objects requires that at least one Windows 2003 or 2008 Domain Controller is available.

## LICENSING

Active Administrator is licensed based on the number of user accounts in your Active Directory.

For pricing, contact your ScriptLogic reseller or call ScriptLogic at 1.800.813.6415 or 1.561.886.2420